

Olivier®

The grand scale, traditional design details and superior performance insures the Olivier impresses.



Aged Bronze Olivier with 70" Premier Hand-Scraped Walnut Blades

Model-Finish **OV70AG**
 Blade-Finish **B570P-WAL**
 Light-Finish **Integrated**

Features

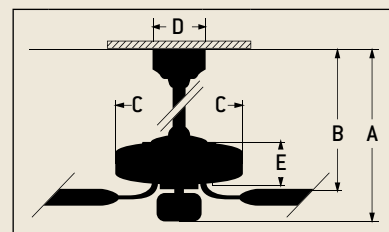
- Energy Saving, 6 Speed Reversible DC Motor
- 4" and 6" Downrods (Included)
- Lifetime Limited Warranty
- Blades Sold Separately
- Integrated Amber Tinted Hammered Glass Light Kit
[3-60W Candelabra Bulbs Included]
- DC Remote and Wall Control (Included)
- Suitable for Wet Locations



Specs

- Blade Sweep 70"
- Number of Blades 5
- Blade Pitch 14°
- Motor Size (MM) Energy Saving DC
- AMPS (HI Speed) 0.44
- Watts (HI Speed) 34
- RPM (HI-MED-LOW) 105/95/83/
74/62/52
- Shipping Wt. (lbs.) 33.0
- CU. FT. in Carton 4.2
- Airflow* 6,977
(Cubic Feet Per Minute)
- Electricity Use* 34 Watts
- Airflow Efficiency* 205
(Cubic Feet Per Minute Per Watt)

Ceiling Drop Dimensions



- | | |
|------------------|------------------|
| A: 4" DR - 25.0" | B: 4" DR - 11.0" |
| A: 6" DR - 27.0" | B: 6" DR - 13.0" |
| C: 14.0" | D: 6.0" |
| E: 21.0" | |

DR: Downrod

Compare: 49" to 60" ceiling fans have airflow efficiencies ranging from approximately 51 to 176 cubic feet per minute per watt at high speed.

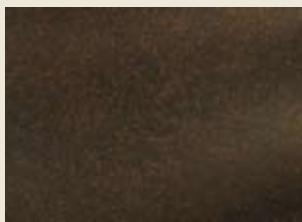
Popular Combinations



Aged Bronze Olivier with 70" Custom Carved Scalloped Walnut Blades

- Model-Finish **OV70AG**
- Blade-Finish **B570C-1**
- Light-Finish **Integrated**

Available Finishes



AG
Aged Bronze

Blade Options

Type 4 Blades
(see page 198)



Light Kit Options

Integrated Light Kit

Remotes



DC Remote Control
(Included)



DC Wall Control
(Included)