

# Ol' Madrid 2™

The Ol' Madrid 2 features a Tea-Stained glass body, and has a versatile tripod mount or close mount feature (optional).



Oiled Bronze Ol' Madrid 2 with 56" Custom Carved Classic Ebony Blades

Model-Finish **OL2520B**  
 Blade-Finish **B556C-SB4**  
 Light-Finish **Not Shown**

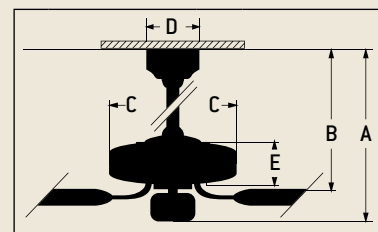
## Features

- Heavy-Duty, 3 Speed Reversible Motor
- 2" and 6" Downrods (Included)
- Limited Lifetime Warranty
- Blades Sold Separately
- Integrated Uplight Tea-Stained Glass (3-13W CFL Bulbs Included)
- Light Kit Adaptable (Optional)
- Both TCS Controls Available (Optional)
- Patented Tripod Mounting System (For Use on Min. 9' Ceilings)
- Tripod Close Mount Kit Available for Lower Ceilings (Optional)

## Specs

■ Blade Sweep Opt.	44", 52", 54", 56"
■ Number of Blades	5
■ Blade Pitch	14°
■ Motor Size (MM)	188 x 15
■ AMPS (HI Speed)	0.7
■ Watts (HI Speed)	70
■ RPM (HI-MED-LOW)	210-120-78
■ Shipping Wt. (lbs.)	24.1
■ CU. FT. in Carton	2.48
■ Airflow* (Cubic Feet Per Minute)	6,016
■ Electricity Use*	70 Watts
■ Airflow Efficiency* (Cubic Feet Per Minute Per Watt)	86

## Ceiling Drop Dimensions



A: 2" DR - 22.5"	B: 2" DR - 19.5"
A: 6" DR - 26.5"	B: 6" DR - 23.5"
C: 18.5"	D: 6.0"
E: 5.0"	

DR: Downrod

\*Compare: 36" to 48" ceiling fans have airflow efficiencies ranging from approximately 71 to 86 cubic feet per minute per watt at high speed.\*

\*Compare: 49" to 60" ceiling fans have airflow efficiencies ranging from approximately 51 to 176 cubic feet per minute per watt at high speed.\*

# Popular Combinations



Aged Bronze Ol' Madrid 2 with 52" Standard Pear Wood Blades and Light Kit

Model-Finish **OL252AG**  
 Blade-Finish **B552S-PW**  
 Light-Finish **DLK-37AG**



Oiled Bronze Ol' Madrid 2 with 54" Premier Hand-Scraped Teak Blades

Model-Finish **OL2520B**  
 Blade-Finish **B554P-TK7**  
 Light-Finish **Not Shown**



Aged Bronze Ol' Madrid 2 with 54" Premier Hand-Scraped Walnut Blades

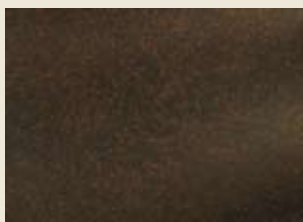
Model-Finish **OL252AG**  
 Blade-Finish **B554P-WAL**  
 Light-Finish **Not Shown**



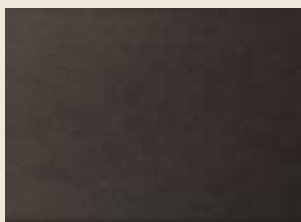
Oiled Bronze Ol' Madrid 2 with 52" Standard Oiled Bronze Blades

Model-Finish **OL2520B**  
 Blade-Finish **B552S-OB**  
 Light-Finish **Not Shown**

## Available Finishes



**AG**  
Aged Bronze



**OB**  
Oiled Bronze



**RI**  
Rustic Iron



**SL**  
Saddle Leather

## Blade Options

Type 1 Blades  
*(see page 188)*



Type 2 Blades  
*(see page 192)*



## Light Kit Options

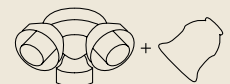
Bowl Light Kits  
*(see page 204)*



Complete Light Kits  
*(see page 208)*



Customize Your Own  
*(see pages 209/211)*



## Remotes



TCS Remote Control  
*(Optional)*  
CT-TCS-(Finish)



TCS-PLUS Wall Control  
*(Optional)*  
CT-TCSPLUS-(Finish)